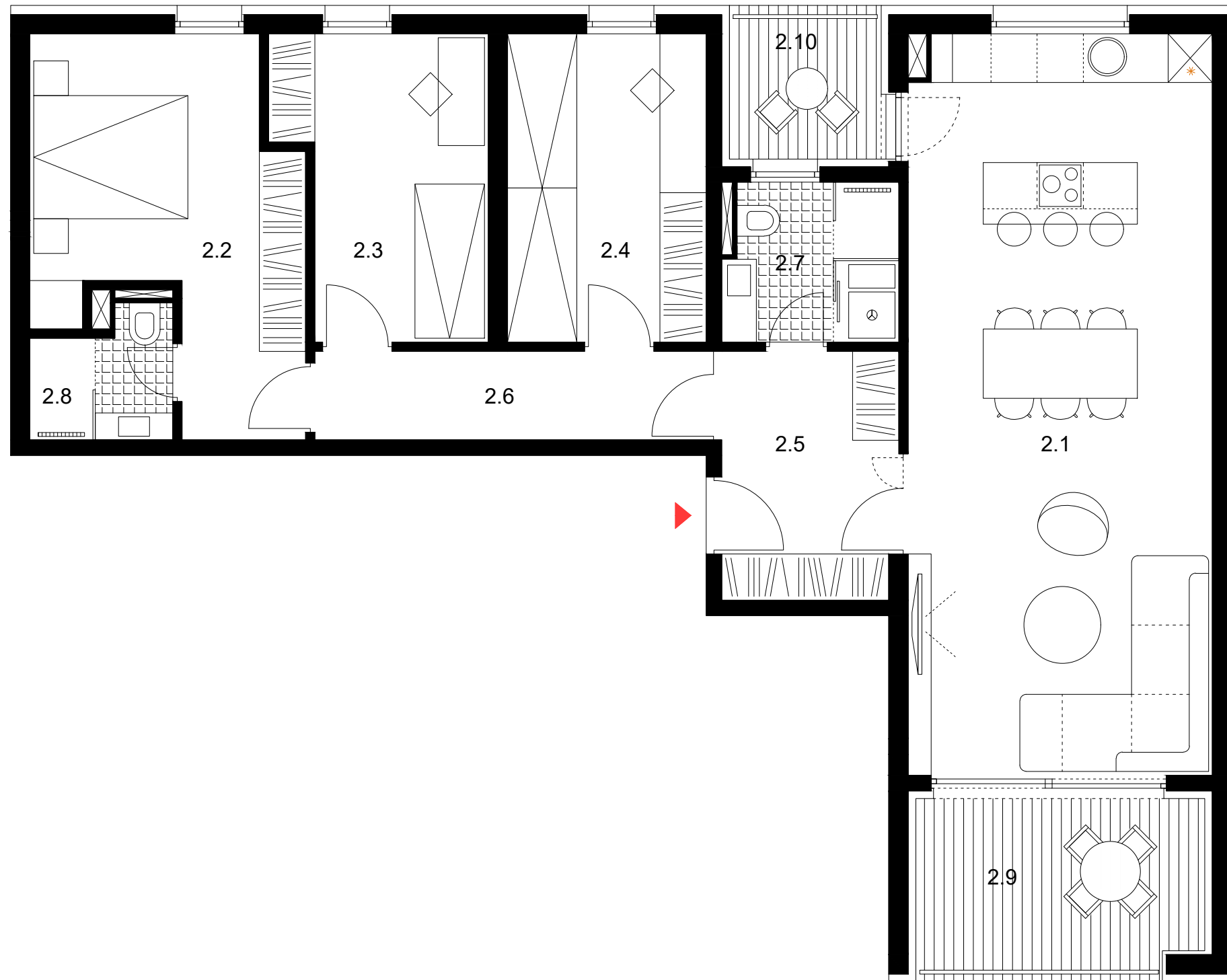
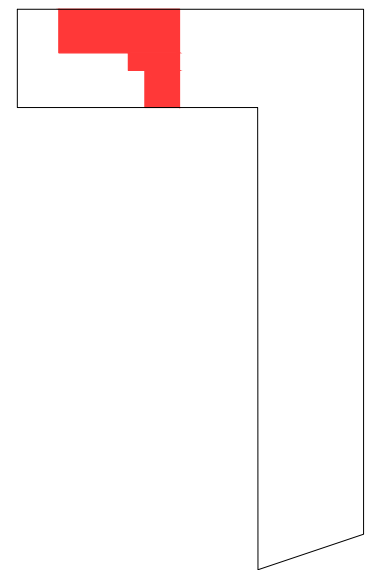




1m



etaža +1,+2,+3,+4,+5 -  
trosoban stan -



shema tlocrta etaže

**stan 2A**

2.1 - dnevni b./kuh./ blagov.	37.80 m <sup>2</sup>
2.2 - spavaća soba 1	14.30 m <sup>2</sup>
2.3 - spavaća soba 2	9.85 m <sup>2</sup>
2.4 - spavaća soba 3	10.30 m <sup>2</sup>
2.5 - ulaz	7.40 m <sup>2</sup>
2.6 - hodnik	5.95 m <sup>2</sup>
2.7 - kupaonica 1	4.60 m <sup>2</sup>
2.8 - kupaonica 2	2.80 m <sup>2</sup>
<b>ukupno</b>	<b>93.00 m<sup>2</sup></b>
+	
2.9 - lođa 1 8.20x0,75	6.15 m <sup>2</sup>
2.10 - lođa 2 3.60x0,75	2.70 m <sup>2</sup>
<b>stan 2A sveukupno</b>	<b>101.85 m<sup>2</sup></b>